

Product Specification

Rosemary & Mint Glaze

Product Code 30041

Pack Sizes

Sales Code	Packaging
2157	5kg
4365	2kg

Description

A blend of critically selected ingredients designed to impart flavour and visual appeal to poultry and meat portions.

Physical

Flavour	Sweet with rosemary and mint notes
Colour	Orange powder with green flecks
Odour	Rosemary and mint aroma
Appearance	Free-flowing powder with particulates

Directions for Use

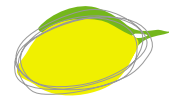
Use 150 grams of glaze per kilogram of meat. Tumble together and allow 5 minutes for the glaze to develop.

Regulatory Status

This product has been produced in accordance with the joint Australian and New Zealand Food Standards Code Volume 2. The appropriate section of Volume 2 Part 1 and 2 should be consulted for details of allowed application and necessary declaration of the ingredients and any food additives listed below. This product is "For Manufacturing Purposes Only".

Ingredient Declaration

Sugar, Maltodextrin, Flavour Enhancer (621), Salt, Mint (2.5%), Wheat Fibre (Gluten Free), Vegetable Gum (415), Paprika Oleoresin (160c), Rosemary Herb Extract (0.1%) [contains Soy], Spice Extract.



Labelling

Each label on or attached to the packaging will clearly state the:- Product Name, Sales Code, Net Weight, Batch Number, Best Before or Use by.

Shelf Life

12 months from the date of manufacture when stored unopened in a clean, cool and dry location.

GMO Status

Non-GMO

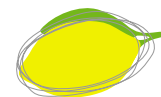
Please note that the above information is correct to the best of our knowledge in accordance with raw material supplier specifications. Company policy is to state that, although items are not sourced from, nor contain, GMO to the best of our knowledge, we make no claim of "GMO free".

Irradiation Status

No

Mandatory Warnings/Advisory Statements

Allergen	Presence
Cereals Containing Gluten and their Products	Absent
Crustacea and their products	Absent
Egg and Egg products	Absent
Fish and Fish products	Absent
Milk and Milk products	Absent
Tree nuts and their products	Absent
Sesame Seeds and their products	Absent
Peanuts and their products	Absent
Soybeans and their products	Present
Sulphite (in concentration >10mg/kg)	Absent
Bee pollen	Absent
Propolis	Absent
Royal Jelly	Absent
Evaporated Milks, dried Milks and equivalent products made from soy or rice, where these foods contain no more than 2.5% m/m fat as reconstituted to directions for direct consumption	Absent
Aspartame (Phenylalanine)	Absent
Quinine	Absent
Guarana or Extracts of Guarana	Absent



Allergen	Presence
Phytosterol Esters	Absent
Tall Oil Phytosterol	Absent
Caffeine	Absent
Milk and beverages made from soy or rice, where these foods contain no more than 2.5% m/m fat	Absent
Unpasteurised egg products	Absent
Unpasteurised Milk and unpasteurised Milk products	Absent

Due to the nature of the blending business, we carry an extensive inventory of raw materials, which may contain some, or all, of the allergens listed above in pure form or as components of other materials. The information stated is provided in good faith and is based upon both formulations and data provided by raw material suppliers. Flavour Makers GMP and HACCP Food Safety Plan ensure that cross contamination between production batches is kept to a minimum, however absolute guarantee cannot be given for all products.

Country of Origin

This product is manufactured in Australia using local and imported ingredients.

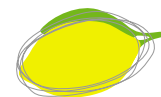
Nutritional Analysis

NUTRITIONAL INFORMATION			
Servings per package: 100g			
Serving size: 100g			
		Average quantity per serving	Average quantity per 100g
Energy	kJ	1323	1323
Protein	g	0.7	0.7
Fat - Total	g	0.4	0.4
Fat - Saturated	g	0.1	0.1
Carbohydrate - Total	g	75.7	75.7
Carbohydrate - Sugar	g	55.1	55.1
Sodium	mg	3608	3608

Nutritional Information provided above is theoretical only and has been calculated from information obtained from Suppliers Specifications for ingoing raw materials. Nutritional Panel is in accordance with Food Standards Code, Amendment 53, Standard 1.2.8, Division 2, Clause 5, Subsection (1).

Additional Sensitive Ingredients Information

Ingredient	Presence
Added Sugar	Present
Added Salt	Present
Added MSG	Present



Ingredient	Presence
Artificial Flavour	Absent
Artificial Sweetener	Absent
Preservatives	Absent
Antioxidant	Absent
Hydrolysed Vegetable Protein	Absent
Yeast and derivatives	Absent
Herb & Spice Extracts	Present
Allium Genus (eg Onion, spring onion, leek, garlic)	Absent
Allium Derivatives	Absent
Legums (eg Beans, peas, lentils, beans sprouts)	Absent
Animal products and derivates	Absent
Artificial Colour	Absent
Lupin	Absent
Chilli	Absent
Celery	Absent

Microbiological Parameters

	Target Limit	Critical Limit
TPC/g	<100,000	1,000,000
MPN Coliforms (TCC)/g	<10	100
MPN E. Coli/g	<3	10
Salmonella In 25g	Not Detected	Not Detected
Yeast/g	500	1,000
Mould/g	500	1,000
Listeria Mono In 25g	Not Detected	Not Detected

Limits apply to all Flavour Makers products and raw materials. Supplier specifications for raw materials are to be deferred to in cases where these limits may not be appropriate.

Target limits express the anticipated results from testing. Results exceeding critical limits must prompt immediate action including retesting and further investigation, recall of product or rejection of raw materials.