

Product Specification

Spinach & Pinenut Stuffing Mix

Product Code 30010

Pack Sizes

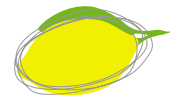
| Sales Code | Packaging |
|------------|-----------|
| 8045 | 5kg |

Description

A blend of critically selected ingredients designed to impart flavour and eye appeal to poultry and meat portions.

Physical

| | |
|-------------------|---|
| Flavour | Breadcrumb with spinach and pinenuts |
| Colour | Tan powder with green and beige particulates |
| Odour | Breadcrumb with slight onion and garlic notes |
| Appearance | Free flowing coarse breadcrumb with dehydrated vegetable & pinenut particulates |



Directions for Use

For a basic stuffing mix, add 1 part stuffing mix to 1 part water.

For a gourmet touch, try the recipe detailed below:

To a 5 Kg bag of stuffing mix, add the following.

3 Kg Minced Chicken (Skin on) OR

2.7 Kg Beef, Lamb or Pork and 300 g of minced Fat

700 ml of Water

10 eggs

For best display results, marinate in Flavour Makers Sun Dried Tomato & Basil Spice.

Regulatory Status

This product has been produced in accordance with the requirements of FSANZ Code.

Ingredient Declaration

Breadcrumbs [Wheat Flour, Water, Mixed Grains (Rye, Barley, Oats), Baker's Yeast, Vegetable Fibre, Gluten, Salt, Canola Oil, Sesame Seeds, Soy Flour, Semolina, Vinegar, Vegetable Gum (412), Sugar, Emulsifiers (481, 472e, 471), Preservatives (282, 200), Molasses, Acidity Regulators (341, 262), Milk Solids, Flavour, Fish Oil, Vitamins (Folic Acid, Thiamin)], Dehydrated Vegetables [Spinach (5%), Pinenuts (8%)], Salt, Herb and Spice.

Labelling

Each label on or attached to the packaging will clearly state the:- Product Name, Sales Code, Net Weight, Batch Number, Best Before or Use by.

Shelf Life

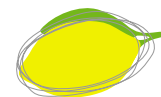
Use By 6 months from the date of manufacture when stored unopened in a clean, cool and dry location.

GMO Status

Non-GMO

Irradiation Status

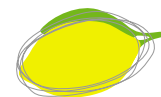
No



Mandatory Warnings/Advisory Statements

| Allergen | Presence |
|--|----------|
| Cereals Containing Gluten and their Products | Present |
| Crustacea and their products | Absent |
| Egg and Egg products | Absent |
| Fish and Fish products | Present |
| Milk and Milk products | Present |
| Tree nuts and their products | Present |
| Sesame Seeds and their products | Present |
| Peanuts and their products | Absent |
| Soybeans and their products | Present |
| Sulphite (in concentration >10mg/kg) | Present |
| Bee pollen | Absent |
| Propolis | Absent |
| Honey | Absent |
| Royal Jelly | Absent |
| Evaporated Milks, dried Milks and equivalent products made from soy or rice, where these foods contain no more than 2.5% m/m fat as reconstituted to directions for direct consumption | Present |
| Aspartame (Phenylalanine) | Absent |
| Quinine | Absent |
| Guarana or Extracts of Guarana | Absent |
| Phytosterol Esters | Absent |
| Tall Oil Phytosterol | Absent |
| Caffeine | Absent |
| Milk and beverages made from soy or rice, where these foods contain no more than 2.5% m/m fat | Present |
| Unpasteurised egg products | Absent |
| Unpasteurised Milk and unpasteurised Milk products | Absent |

Flavour Makers has in place Quality and Food Safety Systems to address allergen management.



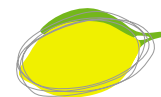
Country of Origin

This product is manufactured in Australia using local (74.1%) and imported ingredients (25.9%).

Nutritional Analysis

| NUTRITIONAL INFORMATION | | | |
|--------------------------------|----|---------------------------------|------------------------------|
| Servings per package: 100g | | | |
| Serving size: 100g | | | |
| | | Average quantity per serving | Average quantity per 100g |
| Energy | kJ | 1582 | 1582 |
| Protein | g | 14.9 | 14.9 |
| Fat - Total | g | 10.1 | 10.1 |
| Fat - Saturated | g | 1.0 | 1.0 |
| Carbohydrate - Total | g | 55.7 | 55.7 |
| Carbohydrate - Sugar | g | 8.3 | 8.3 |
| Sodium | mg | 1121 | 1121 |

Nutritional Information provided above are theoretical averages only and have been calculated from information obtained from Suppliers Specifications for ingoing raw materials.



Additional Sensitive Ingredients Information

| Ingredient | Presence |
|---|----------|
| Added Sugar | Present |
| Added Salt | Present |
| Added MSG | Absent |
| Artificial Flavour | Present |
| Artificial Sweetener | Absent |
| Preservatives | Present |
| Antioxidant | Absent |
| Hydrolysed Vegetable Protein | Absent |
| Yeast and derivatives | Present |
| Herb & Spice Extracts | Absent |
| Allium Genus (eg Onion, spring onion, leek, garlic) | Present |
| Allium Derivatives | Absent |
| Legumes (eg Beans, peas, lentils, beans sprouts) | Absent |
| Animal products and derivates | Present |
| Artificial Colour | Absent |
| Lupin | Absent |
| Chilli | Absent |
| Celery | Absent |



Microbiological Parameters

| | Target Limit | Critical Limit |
|---------------------------|--------------|----------------|
| TPC/g | <100,000 | 1,000,000 |
| MPN Coliforms (TCC)/g | <10 | 100 |
| MPN E. Coli/g | <3 | 10 |
| Salmonella In 25g | Not Detected | Not Detected |
| Yeast/g | 500 | 1,000 |
| Mould/g | 500 | 1,000 |
| Listeria Mono In 25g | Not Detected | Not Detected |
| Bacillus Cereus/g | <100 | 500 |
| Staphylococcus Aureus/g | <100 | 100 |
| Clostridium Perfringens/g | <100 | 100 |

Additional Information

This product contains sulphites 11 ppm (theoretical).